







# From Risk to Resilience Summit



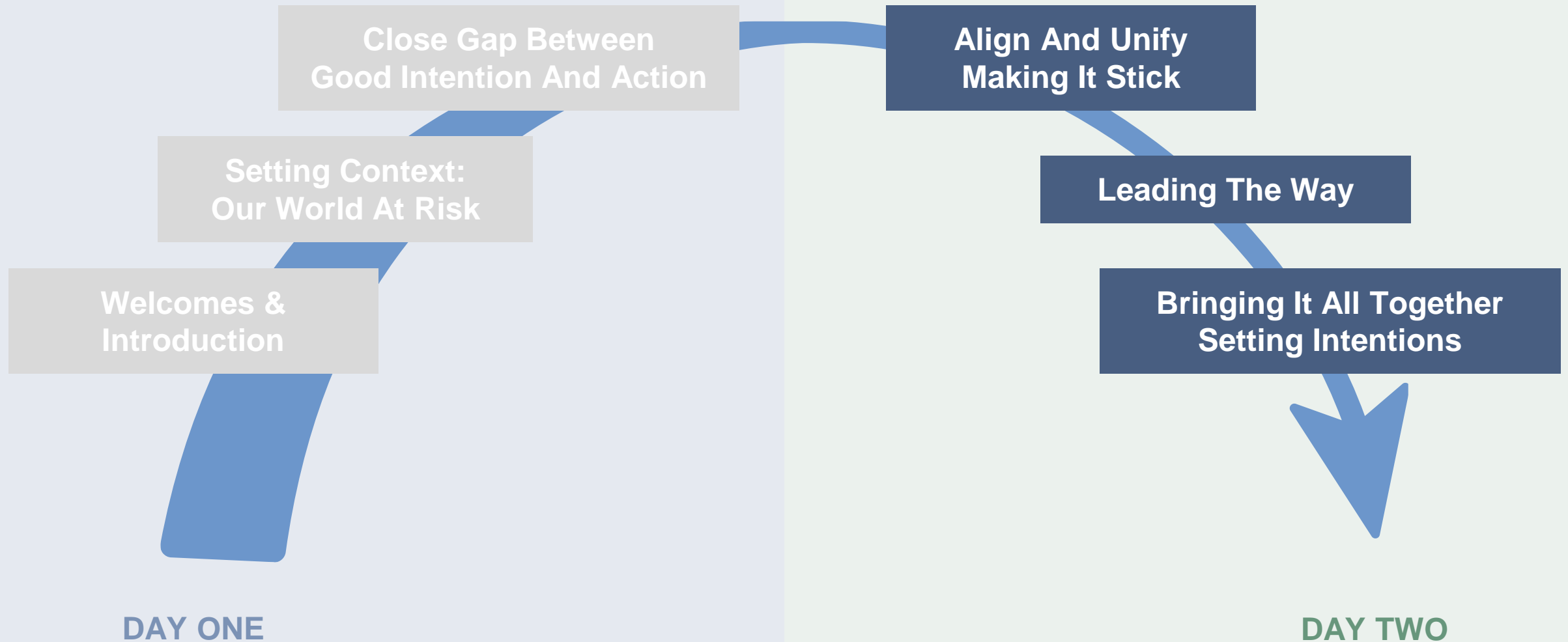
## Welcome back – Day Two

Dr Mark Crossweller AFSM

Founder and Director, Ethical Intelligence



# Wrap up – Day One







# From Risk to Resilience Summit



## Graphic Recording

Dayna Hayman

Freelance Graphic Recording



## **Session Three**

Aligning and unifying efforts -  
making it stick





# From Risk to Resilience Summit



The discussion we desperately need to have

Tyson Yunkaporta

Senior Lecturer Indigenous Knowledges,  
Deakin University

Author of Sand Talk: How Indigenous  
Thinking Can Save the World

[www.slido.com](https://www.slido.com)

#RiskToResilience







# From Risk to Resilience Summit



*‘What will you do to incorporate First Nations thinking and knowledge in your organisation’s Culture and governance?’*





# From Risk to Resilience Summit



## Earth-centred governance: the ideas that lie beneath

Dr. Michelle Maloney

Co-Founder and National Convenor,  
Australian Earth Laws Alliance

[www.slido.com](https://www.slido.com)

#RiskToResilience





# Earth centred governance – the ideas that lie beneath

---

Dr Michelle Maloney  
Australian Earth Laws Alliance

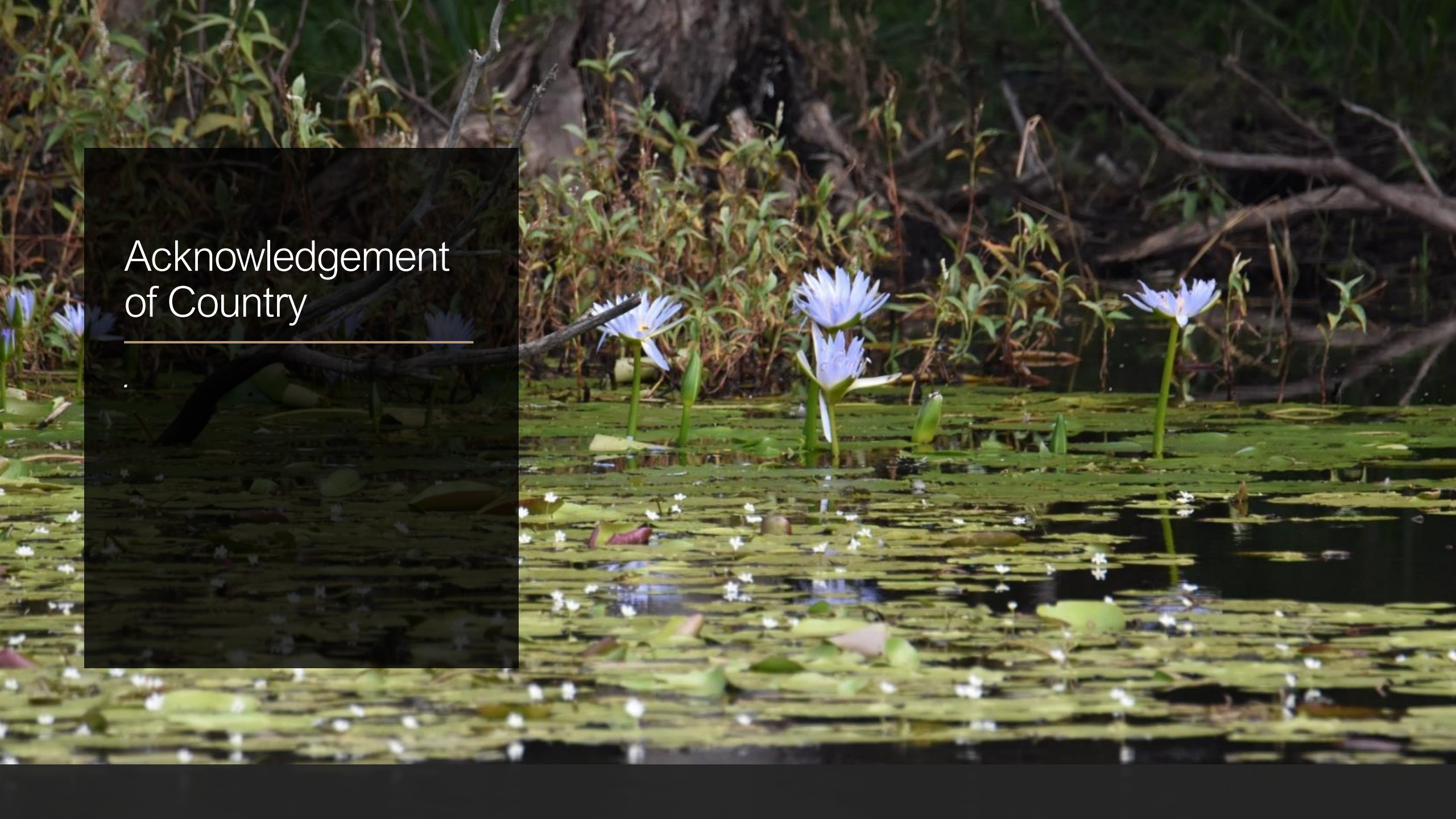
[www.earthlaws.org.au](http://www.earthlaws.org.au)





# Acknowledgement of Country

---





# An Earth centred perspective

---

- ❖ What we face
- ❖ What we must do now
- ❖ How do we do it?





# Selected “Draft actions for discussion at Summit”

---

Embed Caring for Country as a first principle

Invest in PLACE BASED case studies and bottom up processes that connect through different levels

Build competencies, capability, capacity for youth

Formalise/mandate wider range of VALUES in governance, decision making and investment processes

Shift narratives away from ‘risk’ headline to those that enable people to find pathways to a future where they flourish



What we face



# Our changing world

---

Climate Change

Biodiversity loss

Degraded ecosystems

Loss of 'the wild'

Shortage of important stuff  
people need: food, water







Beneath these  
symptoms –  
the cause?

---

OUR FAILURE TO MANAGE  
OUR RELATIONSHIP WITH  
THE LIVING WORLD

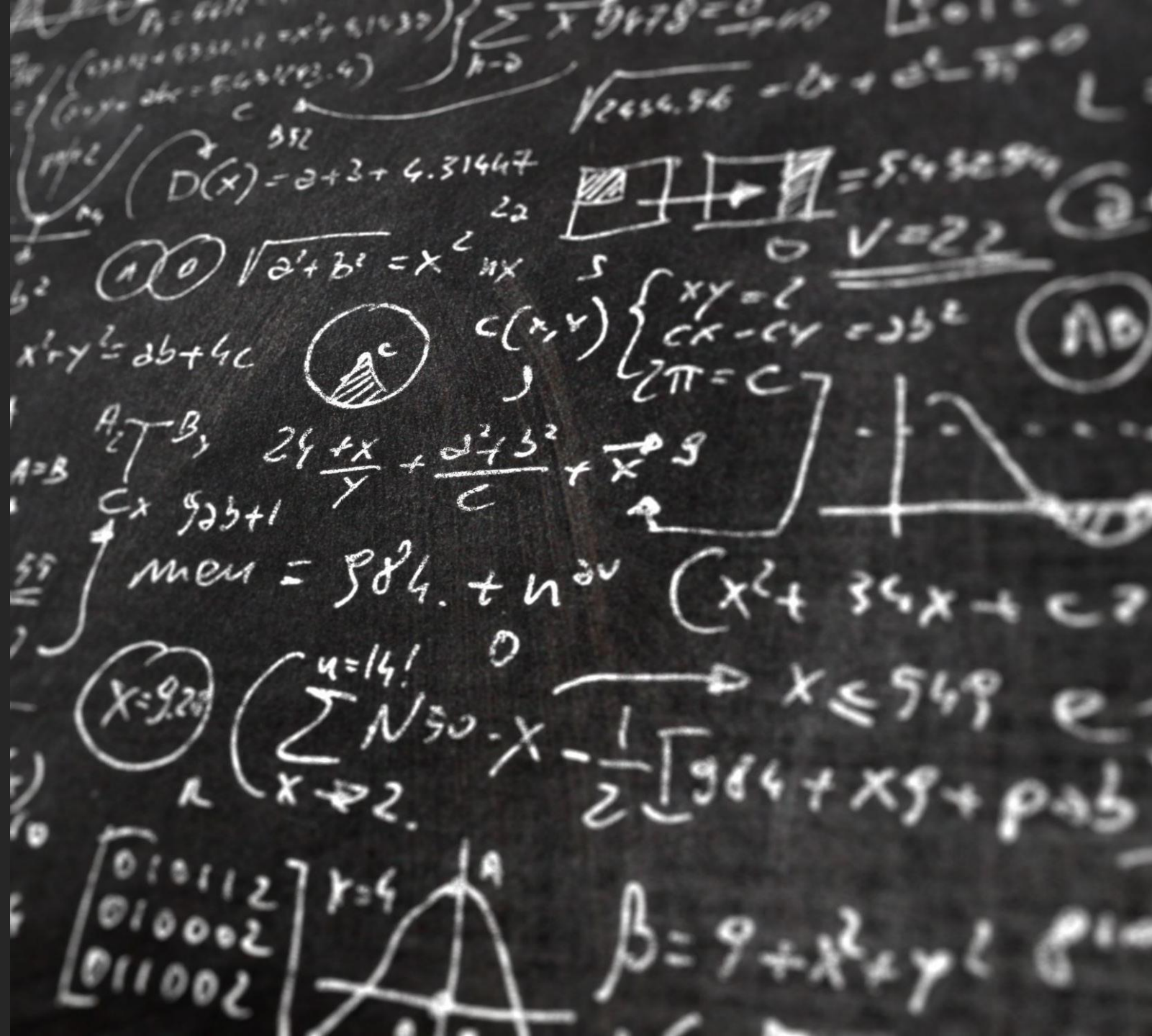


What we must  
do now



“We can not solve our problems with the same level of thinking that created them.” – Albert Einstein

---





# What we must do now

---

Challenge our mindset, to inform our actions

Challenge modern industrialised societies' culture

- ❖ Human-centred
- ❖ Extractivist – material growth oriented
- ❖ Expansionist – “if we run out, we can get more”





*Challenge human-  
centredness*

Understand our place  
in the wider Earth  
community

---

DEEP TIME – HOLD YOUR  
BREATH

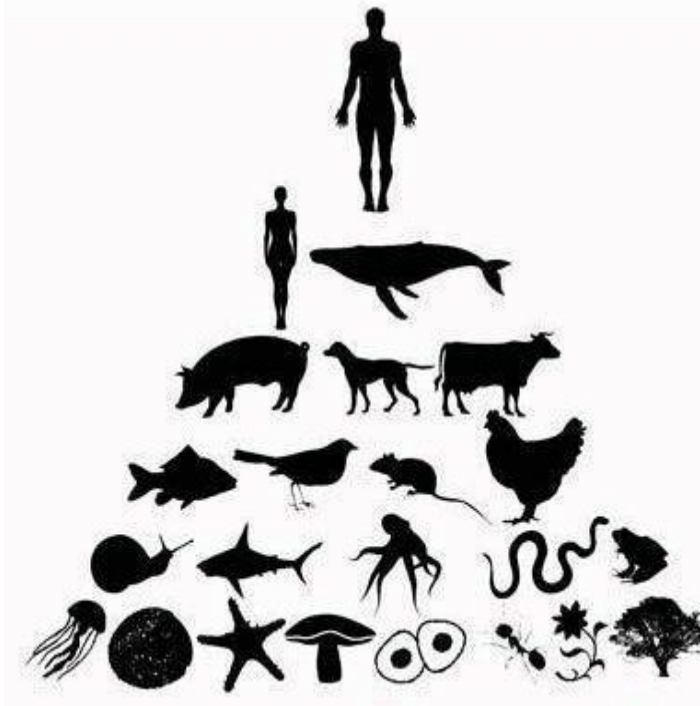
WE ARE JUST ONE PART  
OF THE EARTH  
COMMUNITY

LIFE IS PRIMARY





Earth jurisprudence calls for us to shift all our **governance systems** to be ecocentric, and to nurture the Earth community. – Earth centred systems change.



Human centred



Earth centred



# Challenge extractivism

---

BUILD A REGENERATIVE  
WAY OF UNDERSTANDING,  
THINKING, FEELING,  
DOING





# Challenge expansionism

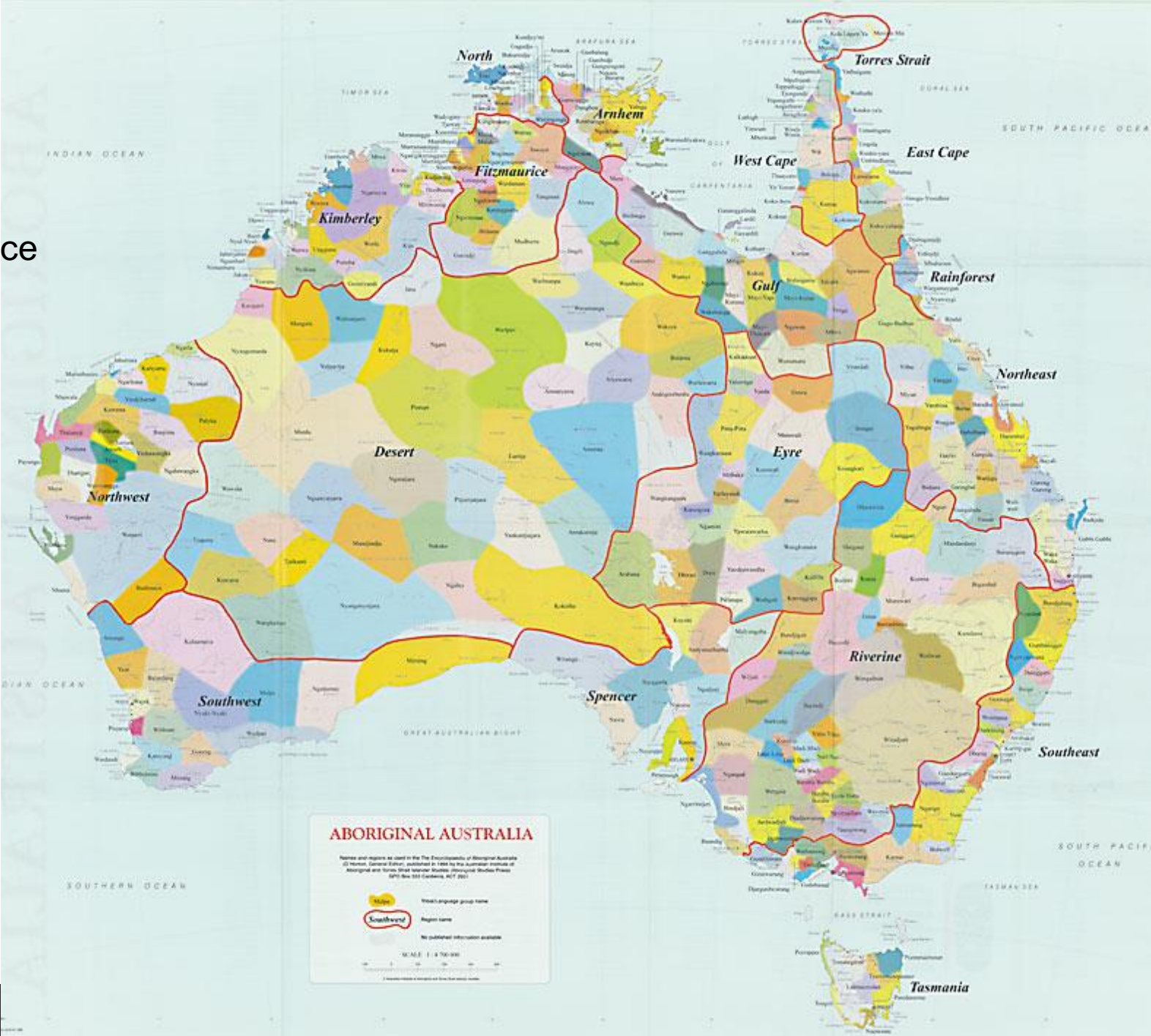


BRITISH EMPIRE



World's most  
successful governance  
model

Bioregional  
Steady-state  
society





How do we do it?



# Critique of current governance – we ask too much from the living world

---

## **Law and Government**

- Legal system is supporting exploitation rather than protecting the natural world from destruction

**Economics** - neoliberal growth economics;

**Universities/education** – perpetuate current system, lack of critical thinking



# Draft actions for discussion at Summit

---

Embed Caring for Country as a first principle

Invest in place-based case studies and bottom up processes that connect through different levels

Build competencies, capability, capacity for youth

Formalise/mandate wider range of VALUES in governance, decision making and investment processes

Shift narratives away from 'risk' headline to those that enable people to find pathways to a future where they flourish



# Greenprints

Civil society ('bottom up')  
Place based  
Steady state  
Regenerative  
Local capacity, local governance



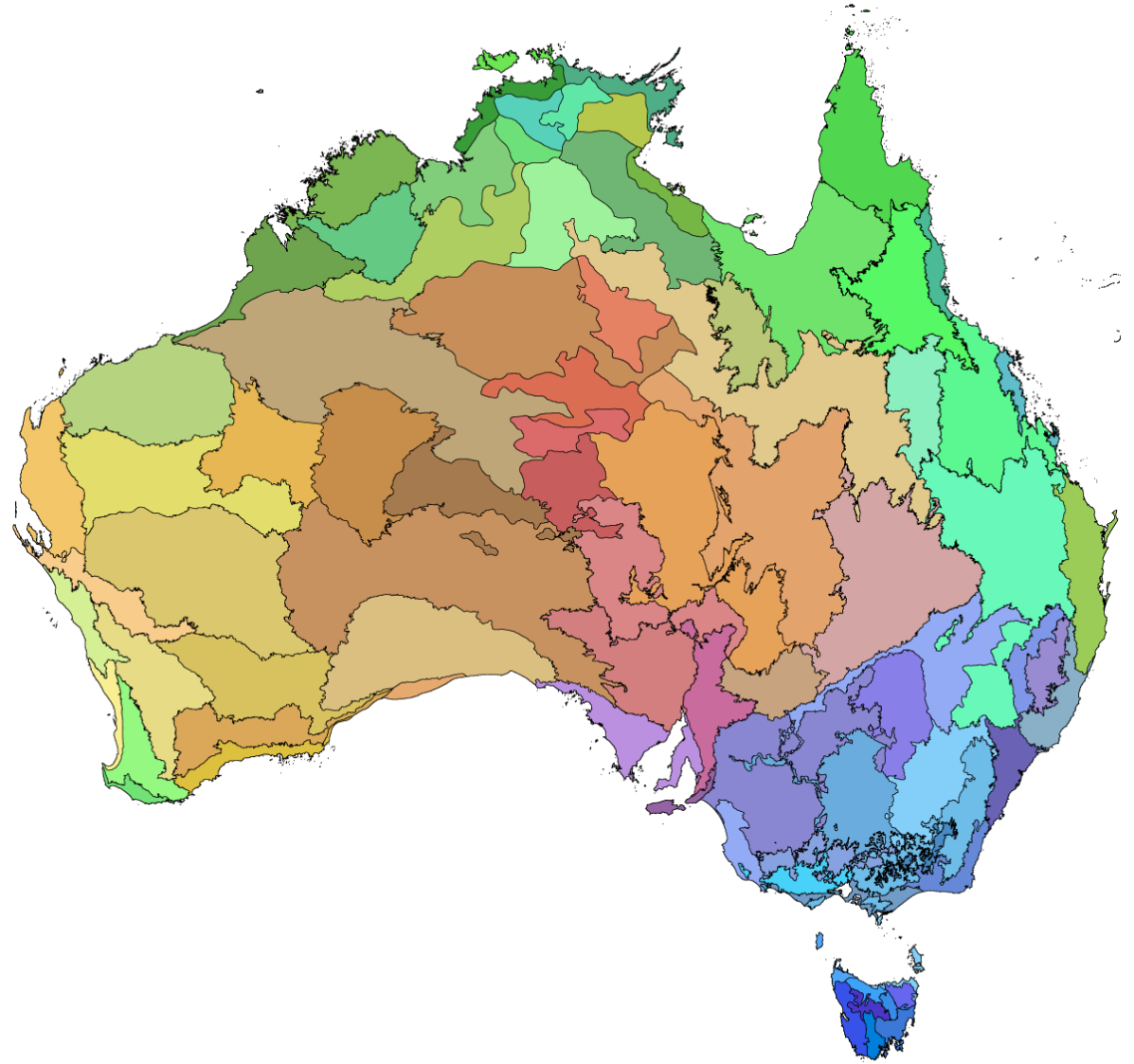


[greenprints.org.au](http://greenprints.org.au)



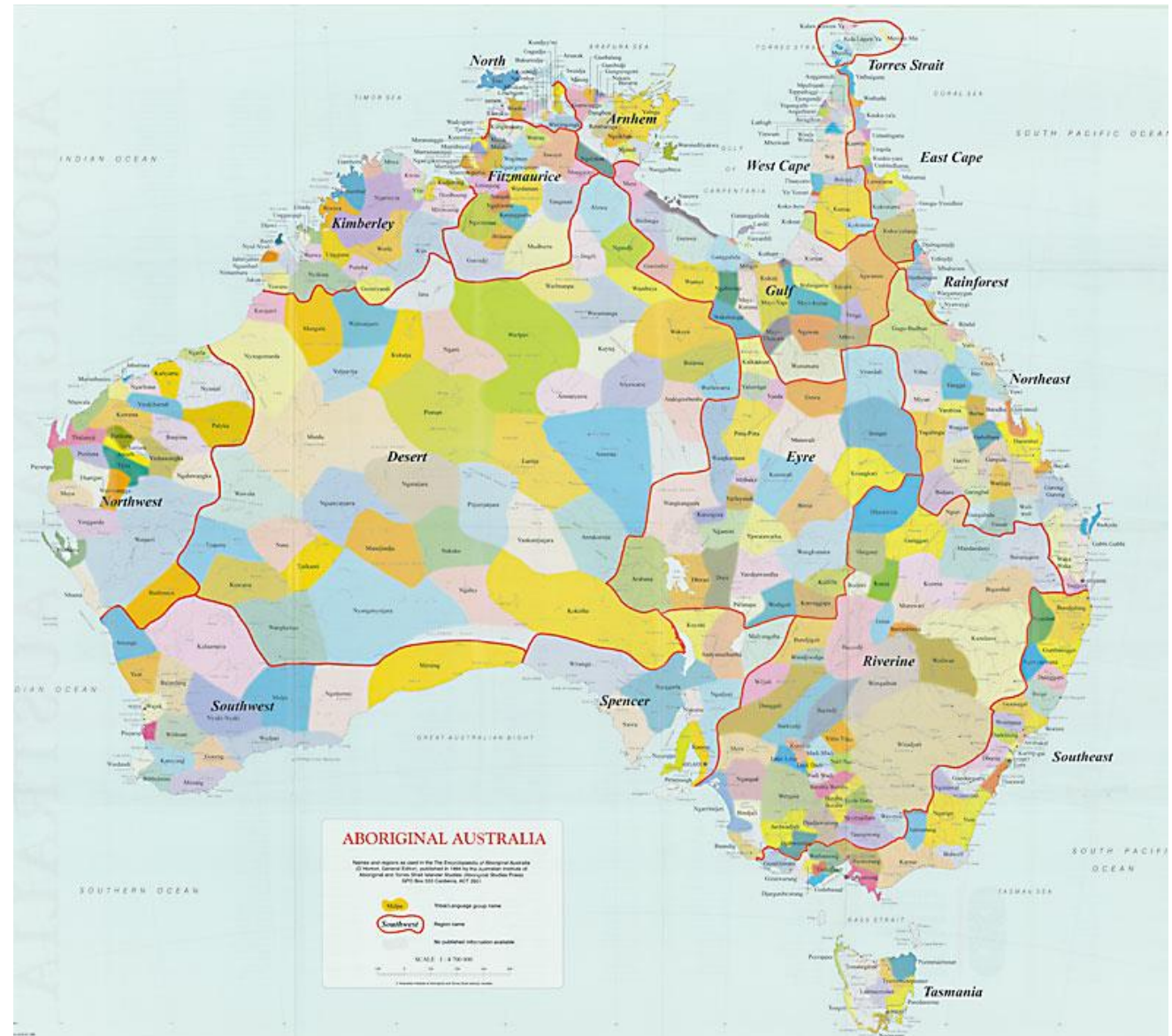


Vision – healthy  
bioregions,  
catchments,  
people and  
biodiversity





# Vision – healthy Country and healthy communities





# The Greenprints Steps

6. Develop scenarios for change

7. Collective decision-making processes

1. Think differently

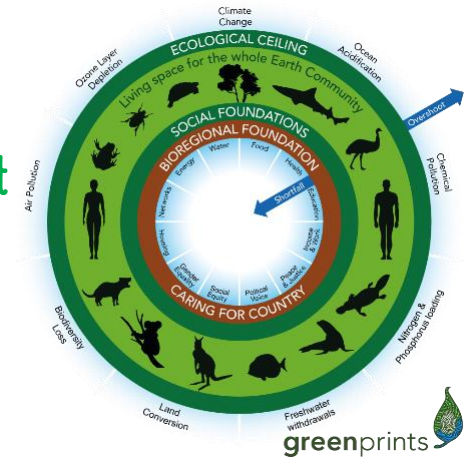
2. Define ecological boundaries

3. Understand ecological foundations

4. Understand human activities, past and present

5. Health check: are we in overshoot?

8. Develop transition action plans and start to implement  
*(loop back to Step 4 and keep going!)*





Earth  
jurisprudence  
helps us  
challenge the  
ideas that lie  
beneath the  
destructive  
capacity of  
industrial  
societies





Thank you!

[aela@earthlaws.org.au](mailto:aela@earthlaws.org.au)

[www.earthlaws.org.au](http://www.earthlaws.org.au)



Mark Berkery





# From Risk to Resilience Summit



*‘What can you do to better align social justice, nature-based solutions, and risk reduction’*





# From Risk to Resilience Summit



## Morning Tea

10.30 am – 11 am

**Next:** Panel provocation and discussion





# From Risk to Resilience Summit



## Panel provocation and discussion

Linda Scott

President, Australian Local Government Association

Nina Keath

Senior Strategic Planner, City of Onkaparinga

John Richardson

National Resilience Advisor, Australian Red Cross

[www.slido.com](http://www.slido.com)

#RiskToResilience





# Where We Are Now:



## **The emerging action we have discussed:**

Invest in place-based case studies & bottom up processes that connect through different levels.

## **The emerging action we are now discussing:**

Invest in people & process, not only products & 'things'.  
E.g. Co-design processes, networks and co-ordinating bodies to catalyse collaboration and change.



Invest in place-based case studies & bottom-up processes that connect through different levels

Invest in people & process, not only products & 'things' e.g., co-design processes, networks and co-ordinating bodies to catalyse collaboration and change

1. Individually consider the most concrete actions on HOW to do this 'better' or 'differently', and why you think it's on that pathway.
2. Enter your reflection into Slido.



Investment is needed in multiple areas and across all domains – social, environmental and economic: nature based and innovative solutions, social infrastructure needs of communities, built infrastructure, financial infrastructure, supply chain risk/major transportation corridors and routes and research on how to build social resilience.

What are the criteria for prioritising?

1. In your table groups explore the criteria required to prioritise funding for investing in more resilience outcomes. What criteria could be used to achieve collective alignment on large scale infrastructure funding? What should government prioritise?
2. LIST your criteria. You don't need to all agree or prioritise, just put ideas forward, test them, listen, build on At your table using the pens and paper provided.





# From Risk to Resilience Summit



## Lunch

12.30 pm – 1.30 pm

The 'Regenerating Australia' movie will be screened in the main Plenary

**Next:** Session Four – Leading the way





# From Risk to Resilience Summit



## Graphic Recording

Dayna Hayman

Freelance Graphic Recording



# **Session Four**

## Leading the way





# From Risk to Resilience Summit



Interpreting the world: creativity in dealing with disasters

Dr. Jen Rae

Researcher, Facilitator, Educator

[www.slido.com](https://www.slido.com)

#RiskToResilience





# Interpreting the world: creativity in dealing with disasters

Dr Jen Rae

From Risk to Resilience Summit  
Australia's Call to Action

**PORTAGE: FLOTILLA (detail, 2019)**

Jen Rae

RAFT building workshops with Giant Grass, weaving workshops and immersive installation

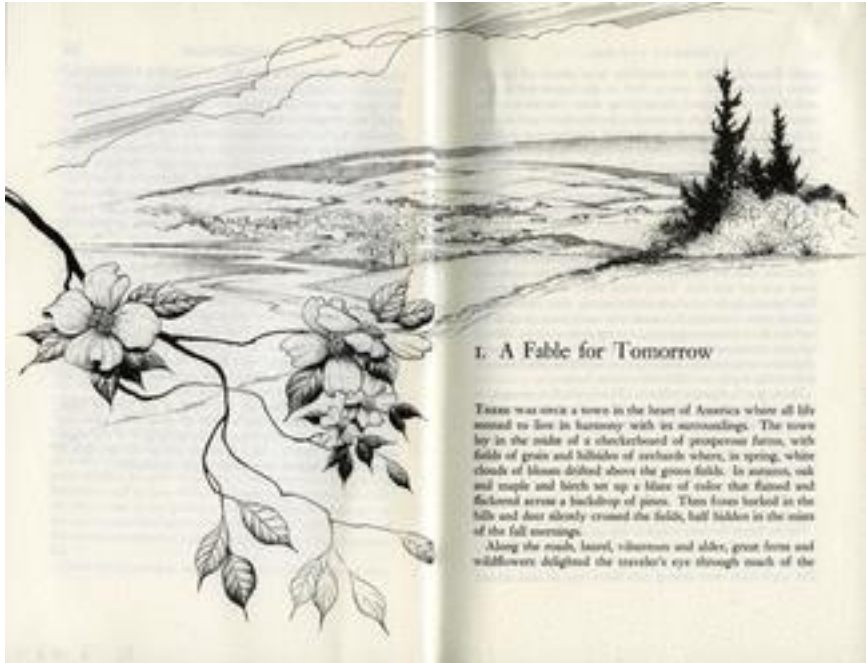
Sound- Marco Cher-Gibard

For REFUGE: Displacement at Arts House

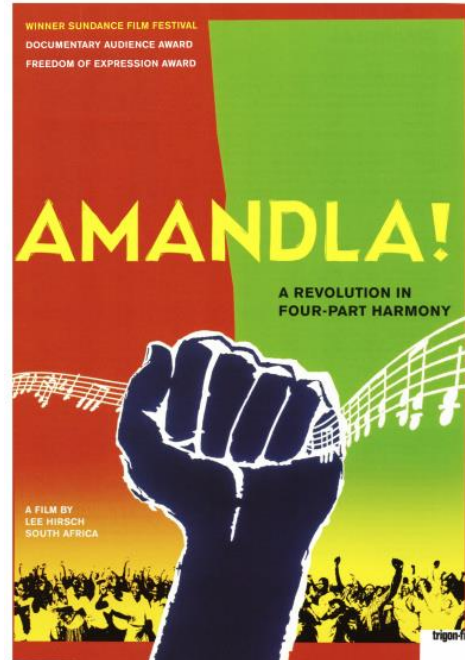
Photo: Bryony Jackson



# How can arts and culture help interpret a turbulent and complex world?



A Fable for Tomorrow – opening of Rachel Carson's *Silent Spring*



AMANDLA! Documentary on the Freedom Songs of the movement to end apartheid



GAP FILLER, *Palette Pavilion* (2012-14) after the Christchurch earthquake

Environmental disaster  
of pesticide use (DDT)

Apartheid  
institutionalized  
racial  
oppression

Christchurch earthquake  
(2011)



# Intersections of art, climate and disaster resilience – International and Australia



SCALE is a “network of networks” of artists and organizations working at the intersection of culture and climate in Canada. Formed in 2021, our mandate is to foster a coordinated, artful and impactful response to the climate emergency from Canada’s arts and culture sector.

Julie’s Bicycle

CREATIVE • CLIMATE • ACTION

Creative Climate Leadership (CCL) is an international training and transformation programme to empower artists and cultural professionals to take action on the climate and ecological crisis with impact, creativity, and resilience. Our alumni join an evolving international network of creatives taking action and mobilising others in their field, through events, workshops, artistic works, and projects.



CRN are the lead agency building national recovery capability, linking the creative sector with communities and disaster management, helping people grow and connect through the disaster experience.

CANADA

UK

AUSTRALIA



## CASE STUDY: REFUGE (2016 – present)



REFUGE: Pandemic (2018)

Photo: Emma Byrnes



Jen Rae, *Apitherapy Quarantine: Zone II (Containment Chamber)*

REFUGE: Pandemic (2018)

This is **not** a drill  
This is **not** a model

PLAYING IN THE DARK  
Dramaturgical methodology





**FOOD**

**accessibility**



**HEAT**



**WAYFINDING**

**Safety**

## REHEARSING CLIMATE-RELATED DISASTERS

What are we practicing?

What risks are we taking?

What are we preparing for?

Responding to?

Recovering from?



**Self-reliance**

**HEALTH +  
Well being**



**EMPATHY**

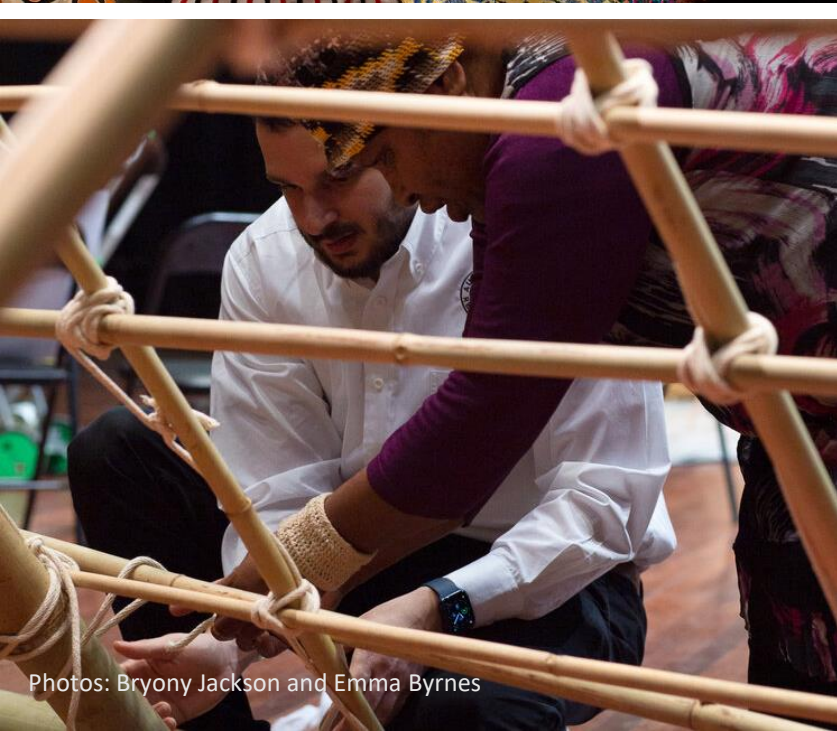
**ENERGY**

Photos: Bryony Jackson + James Henry  
©Arts House





DISASTERS ARE A TERRIBLE TIME TO LEARN NEW SKILLS



PORTAGE: RAFT, FLOTILLA + SHELTER2CAMP (2019-2021)

Jen Rae

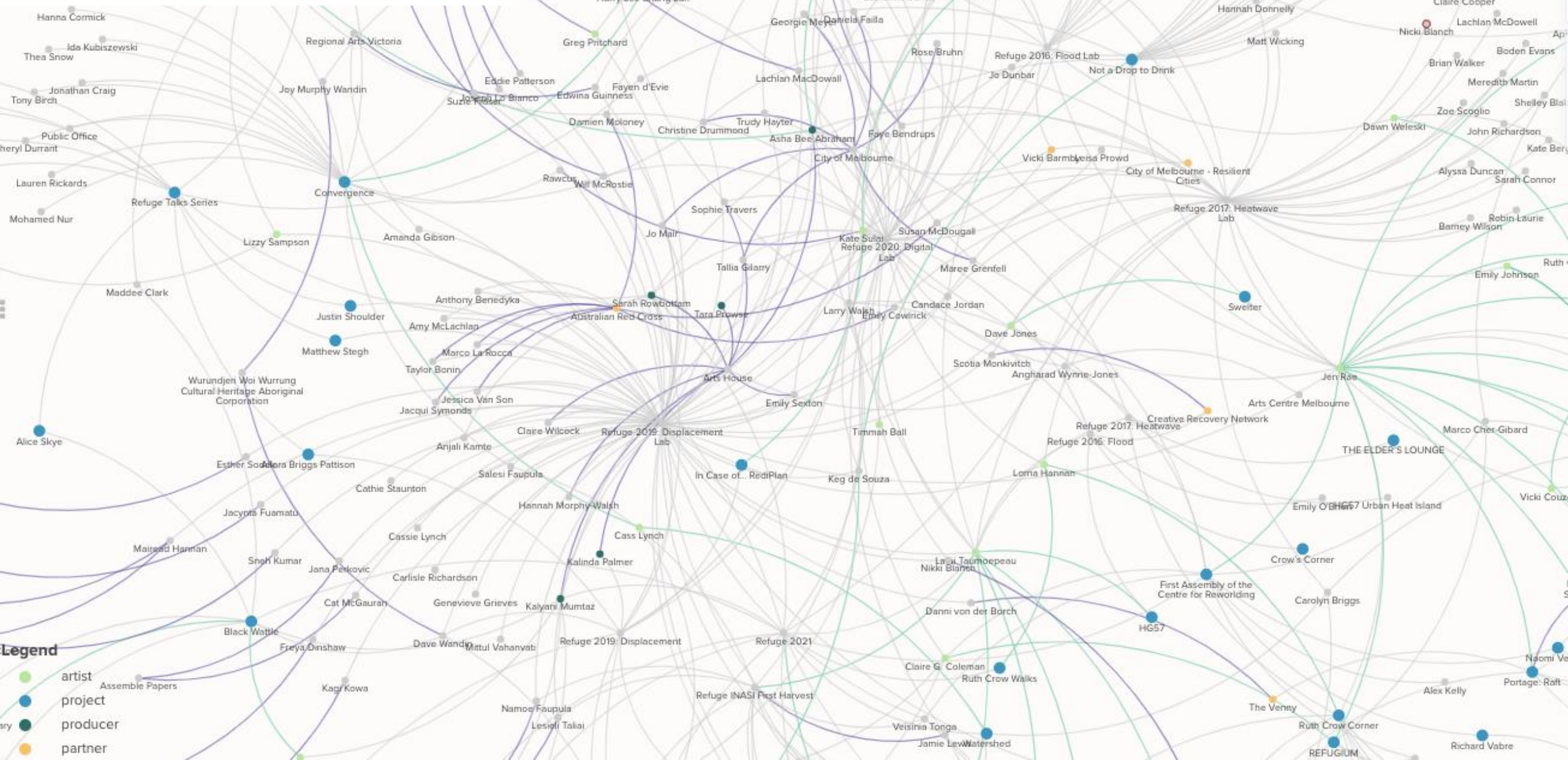
In collaboration with Giant Grass (RAFT, 2019) and Aunties Dr Vicki Couzens, Bronwyn Razem, Vicki Kinai, Muhubo Sulieman

Photos: Bryony Jackson and Emma Byrnes



## REFUGE stakeholder constellation (2016-2021)

Jen Rae, Sarah Rowbottam Lee Shang Lun, Latai Taumopeau,



### Legend



ary ●





# CREATIVE RESILIENCE LAB

Jen-Rae + Maree Grenfell

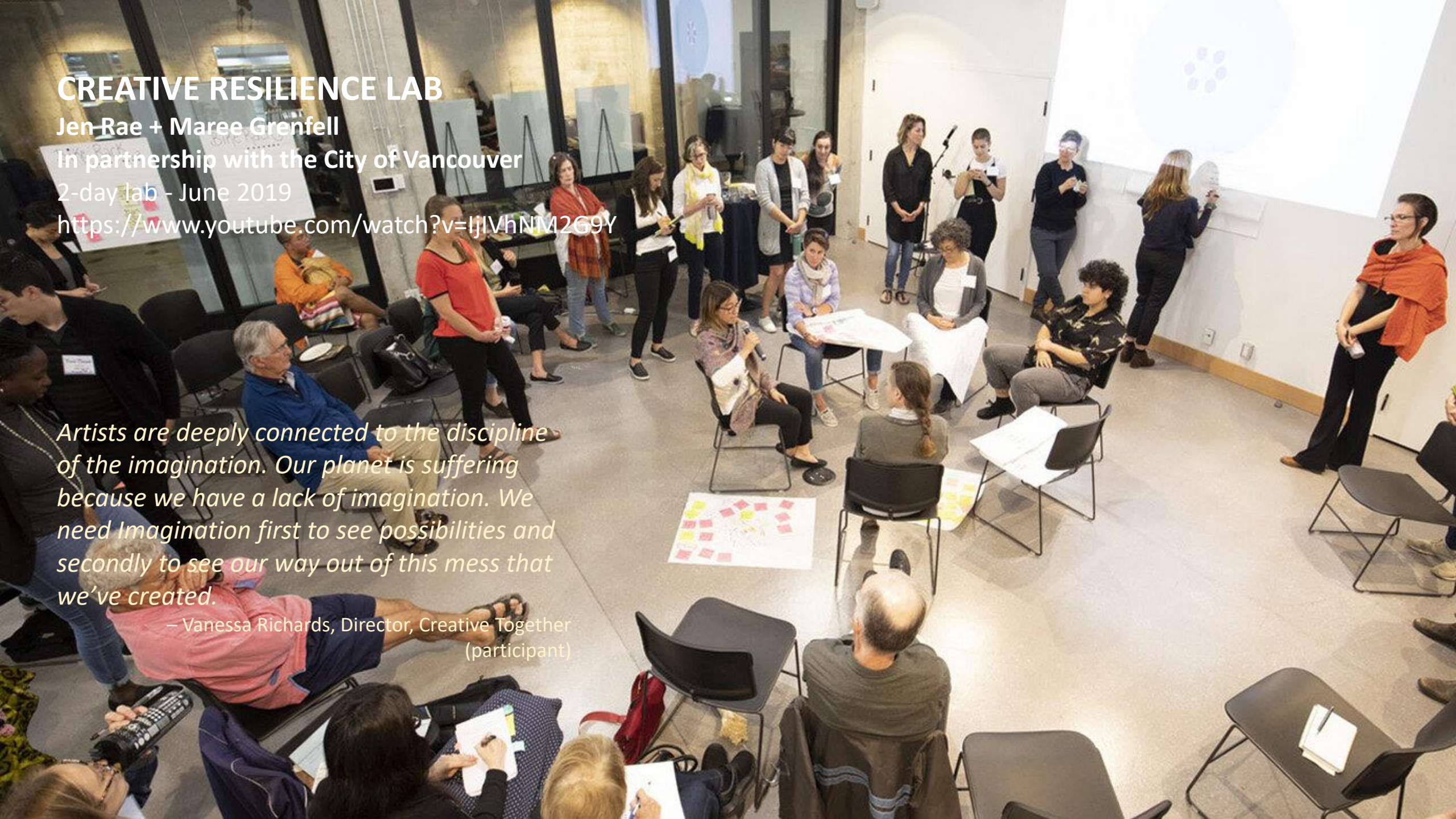
In partnership with the City of Vancouver

2-day lab - June 2019

<https://www.youtube.com/watch?v=IjIVhNM2G9Y>

*Artists are deeply connected to the discipline of the imagination. Our planet is suffering because we have a lack of imagination. We need Imagination first to see possibilities and secondly to see our way out of this mess that we've created.*

– Vanessa Richards, Director, Creative Together  
(participant)





# CITY OF MELBOURNE

## Emergency Exercise Torrent— Flood recovery North Melbourne

17 June 2022

Co-designed and co-facilitated with artists  
Jen Rae, Kate Sulan and Jonathan Craig

*The biggest challenge in engaging communities in disaster preparedness is the balance of community understanding what they, the community can do themselves in advance of an emergency (rather than when it actually happens) and how emergency services and councils can **work with them** to achieve this.*

*We chose to work with Arts House and REFUGE artists in the design and delivery in this year's emergency exercise with a focus on engaging with the North Melbourne Community around the theme of flood recovery.*

Christine Drummond  
CoM Emergency Management Coordinator



Exercise  
focus areas  
INCLUSION  
COMMUNICATION  
VOLUNTEERISM (spontaneous + organised)



# Priorities for the National Action Plan – *Leading the Way* – the role of arts and culture

From the Centre for Reworlding

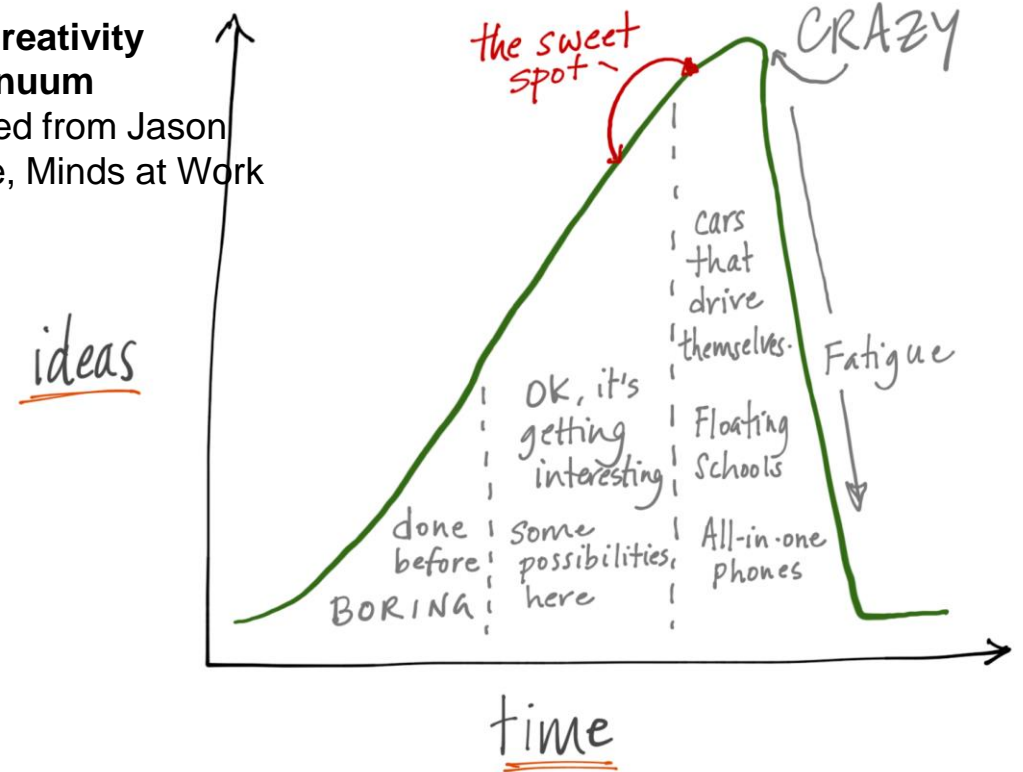
## CREATIVE CLIMATE LEADERSHIP

(1) Prioritising the **mainstream integration** of arts and culture in national climate emergency discourses, policy frameworks and tertiary education with funding to support the expertise and mentorship of artists, designers and cultural producers.

## CULTURAL CONSTELLATIONS

(2) Prioritise the **representation** with **remuneration** of First Peoples, CALD, youth and LGBTIQ+ peoples at all levels of authority and decision-making in climate change adaptation, disaster preparedness and resilience.

**The Creativity Continuum**  
adapted from Jason Clarke, Minds at Work





# Thank you Q&A

## CONTACT

**Dr Jen Rae**

Centre for Reworlding

[hello@centreforreworlding.com](mailto:hello@centreforreworlding.com)

[www.jenraeis.com](http://www.jenraeis.com)

M: 0406 511 707

Research Fellow, RMIT University, School of Design & Social Context

[Jen.rae2@rmit.edu.au](mailto:Jen.rae2@rmit.edu.au)

More on REFUGE visit

<https://www.artshouse.com.au/artist-opportunities/refuge/>

Jen Rae + collaborators

*Apitherapy Quarantine (Zone III)*

REFUGE: Pandemic (2018)

Photo: Emma Byrnes





Ready, Steady, Go – detail (2020)  
 Emma Byrnes + Jen Rae





# From Risk to Resilience Summit



*‘How will you build the creative skills necessary for the health and wellbeing of a current and future workforce?’*





# From Risk to Resilience Summit



## What would it look like to lead a priority in the Second National Action Plan?

Anjali Sharma

Student, Climate Activist

[www.slido.com](https://www.slido.com)

#RiskToResilience







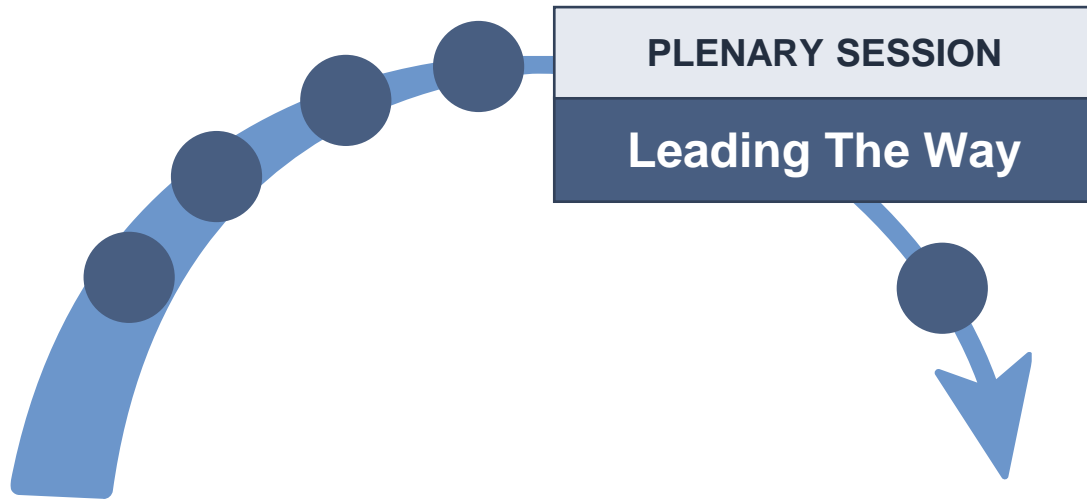
# From Risk to Resilience Summit



*‘How are you preparing yourself and others to lead in these uncertain times?’*



# Where We Are Now:



## **The emerging action we have discussed:**

Invest in people & process, not only products & 'things'.  
E.g. Co-design processes, networks and co-ordinating bodies to catalyse collaboration and change.

## **The emerging action we will now discuss:**

Develop, promote and reward different ways of leading across the system, (re)build trust in institutions.



In your table groups, explore potential future leadership initiatives

Think about:

1. What characteristics, competencies and behaviours to reward or penalise?
2. DRAW the elements using keywords to explain.

Again, you don't all need to agree, just put ideas forward, test them, listen and build on them.



Individually consider what you heard at your table and plenary and type your own answer into Slido to the following questions:

1. What is the most important thing you would do without funding?
2. What is the most important thing you would fund?





# From Risk to Resilience Summit



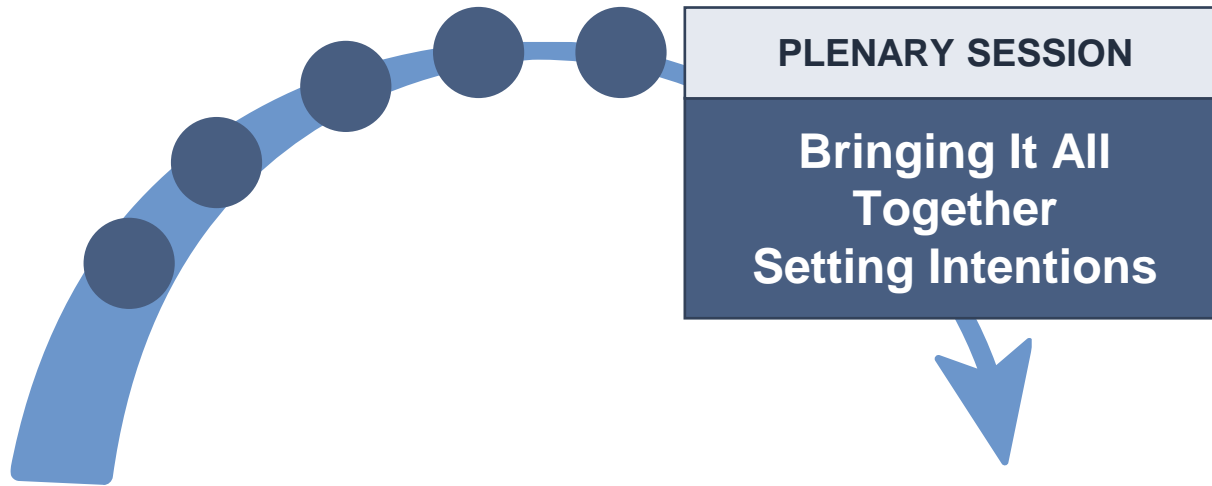
## Afternoon Tea

3.30 pm – 4 pm

**Next:** Bringing it all together – A National Action Plan



# Where We Are Now:



**We've now discussed all of the emerging actions except for:**  
Build outcomes frameworks, embed learning culture, and implement Monitoring Evaluation and Learning to accelerate taking effective action.



# Emerging Actions Developed Across The Deep Dives

*Address root cause of disaster risk, levers for system change*

SPECIFIC ACTIONS FOR  
SYSTEMIC CHANGE

Embed 'Caring for Country' as a first principle.

Invest in place-based case studies & bottom-up processes that connect through different levels.

Build competencies, capability, capacity for youth (and more broadly) to act for their future.

Address mental health by through anticipatory learning, agency & action.

Formalise/mandate wider range of values in governance, decision-making and investment processes.

Develop ways to measure and assess non-financial values.

Invest in and incentivise innovation and action of all stakeholders to reduce liabilities and the creation or transfer of risks, including levers and legal accountability in land-use planning and decision-making and governance.

ENABLING /  
FOUNDATIONAL  
ACTIONS

Shift narratives away from 'risk' headline, to those that enable people to find pathways to a future where they flourish despite uncertainty and continual disruption.

Invest in people & process, not only products & 'things' e.g. co-design processes, networks and co-ordinating bodies to catalyse collaboration and change.

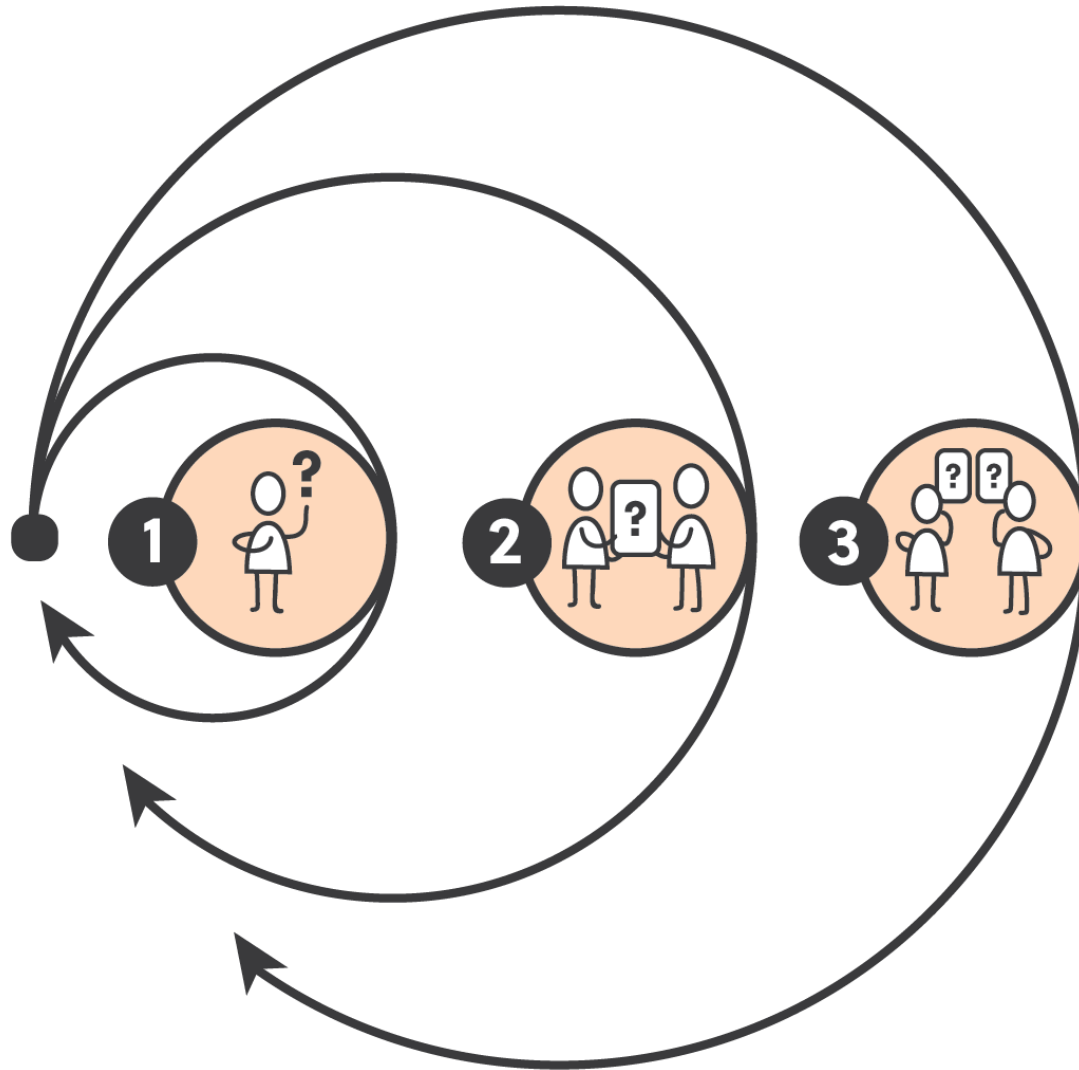
Develop, promote and reward different ways of leading across the system, (re)build trust in institutions.

EMBEDED  
MEL

*Build outcomes frameworks, embed learning culture, and implement effective Monitoring, Evaluation and Learning to accelerate taking effective action.*



## MULTI-LOOP LEARNING



- 1** Are we doing things right?
- 2** Are we doing the right things?
- 3** How do we decide what is right?

Think about one thing you've learned.  
Write it down.





# From Risk to Resilience Summit



## Summit Wrap up

We have asked you so many questions! Have you got any for us?

Write a question you may have for us on a card before you leave for us to collect.



